

Little Gaddesden, HP4 1PL



Little Gaddesden, HP4 IPL
Guide Price £995,000

- Three bedrooms
- Two bathrooms
- Three receptions
- Kitchen /breakfast room
 - Stunning views
- Idyllic popular village location close to amenities
 - Garage
- Additional private parking
 - EPC Rating E
 - Council Tax Band F





Little Gaddesden, HP4 IPL

The entrance hall leads to the spacious dining room which provides a warm welcome with attractive wooden flooring and high ceilings. This room is conveniently open to the kitchen/breakfast room which has beautiful views over the garden and is well equipped with ample worktop space and units with integrated appliances and a handy breakfast bar area. A separate useful utility space provides additional storage. Adjoining the kitchen is a light and spacious conservatory with doors leading to the rear garden, which provides an ideal spot for morning tea. This room leads in turn through to the impressively proportioned sitting room with feature fireplace and large windows to the front aspect which flood the room with natural light. A cloakroom completes the downstairs accommodation. To the first floor the principal bedroom spans the full depth of the property and benefits breathtaking views across the garden and fields beyond. There is also ample fitted wardrobes and an en-suite shower room. The second bedroom to this floor is currently used as a study. Stairs rise to the second floor where there is a third double bedroom with fitted wardrobes and eaves storage which is serviced by a large bathroom across the split landing, which has built in cupboards and eaves storage. Outside the property is accessed via a pretty courtyard where there is also side access to the rear garden which is mainly to lawn with mature hedges and borders, leading to a sunny decked terrace with summer house and vegetable beds beyond. The property has the added benefit of a garage and additional private parking for 3 cars.



Approximate Gross Internal Area
 Ground Floor = 90.8 sq m / 977 sq ft
 First Floor = 52.8 sq m / 568 sq ft
 Second Floor = 36.2 sq m / 390 sq ft
 Garage = 14.0 sq m / 151 sq ft
 Total = 193.8 sq m / 2,086 sq ft

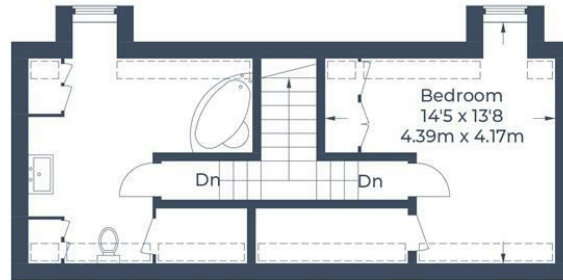


Fine & Country Berkhamsted
 130 High Street, Berkhamsted, Hertfordshire, HP4
 3AT
 01442 877 627
 berkhamsted@fineandcountry.com

Reduced headroom below 1.5m / 5'0"



Ground Floor



Second Floor



First Floor



(Not Shown In Actual Location / Orientation)

Illustration for identification purposes only, measurements are approximate, not to scale.
 © CJ Property Marketing Produced for Fine & Country



Energy Efficiency Rating		Current	Potential
Very energy efficient - lower running costs			
(92 plus)	A		
(81-91)	B		
(69-80)	C		
(55-68)	D		
(39-54)	E		
(21-38)	F		
(1-20)	G		
Not energy efficient - higher running costs			
		42	69
England & Wales		EU Directive 2002/91/EC	

Environmental Impact (CO ₂) Rating		Current	Potential
Very environmentally friendly - lower CO ₂ emissions			
(92 plus)	A		
(81-91)	B		
(69-80)	C		
(55-68)	D		
(39-54)	E		
(21-38)	F		
(1-20)	G		
Not environmentally friendly - higher CO ₂ emissions			
England & Wales		EU Directive 2002/91/EC	

In accordance with the Consumer Protection from Unfair Trading Regulations 2008 (CPRs) and the Business Protection from Misleading Markets Regulations 2008 (BPRs) Fine & Country have prepared these property particulars as a general guide to a broad description of the property. Fine & Country as agents for the vendor or lessor and for themselves give notice that (a) these particulars are not intended to constitute part of an offer or contract (b) have not carried out a structural survey and the services, appliances and fittings have not been tested (c) all measurements, photographs, distances and floor plans referred to are given as a guide only and should not be relied upon for the purchase of fixtures and fittings (d) tenure details, service charges and ground rent (where applicable) are given as a guide only and should be checked and confirmed by your solicitor prior to exchange of contracts (e) neither the vendor nor any person in the employment of Fine & Country has any authority to make or give any representation or warranty whatsoever in respect of the property.